



EBIR
bathroom lighting

360

ALL THAT YOU NEED







A new polymer developed by EBIR, characterized by optical properties and applied in all our protectors.



**GREAT
TRANSMITTER
OF LIGHT**



**HIGH
TEMPERATURES
RESISTANT**



**MAXIMUM
IMPACT
RESISTANCE**



**RESISTANCE TO
CLEANING
PRODUCTS**



**MAXIMUM
ELECTRICAL
SAFETY**



**GREAT
DURABILITY**



LIGHT



ECO-FRIENDLY

NIKITA

LED SPOTLIGHT

mm: 300

PC / PP
EBIREX

DRIVER
LESS



4000 K



5700 K

Decoration: body + frame



White + Chrome



White + White



NIKITA 300 mm

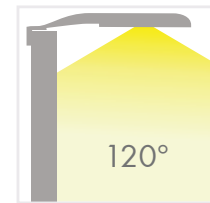
TECHNICAL INFORMATION

REF	Power	Color Temperature	Luminosity	Installation surfaces
E26469CI	10W	10W	1866 lm	Cabinet, Wooden backing, Mirror
E26378CI	10W	10W	1866 lm	Cabinet, Wooden backing, Mirror

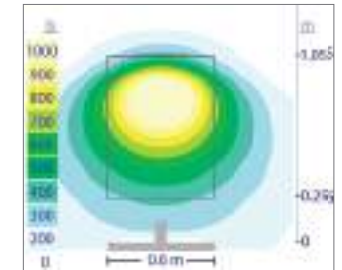
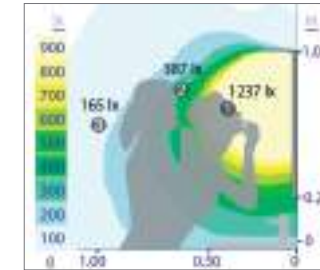
White + White

White + Chrome

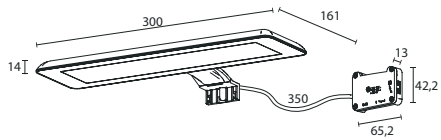
LIGHT BEAM



PHOTOMETRIC CURVES



TECHNICAL DRAWING



INSTALLATION SURFACES



S2 Mirror cabinet
With multisystem part



S3 Wooden backing



S4 Mirror

NAYRA

LED SPOTLIGHT

mm: 493

Aluminium / PC
EBIREX



5700 K



Picture: Nayra 493 mm

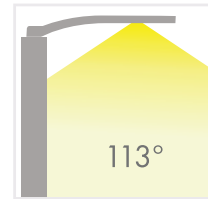
NAYRA 493 mm

TECHNICAL INFORMATION

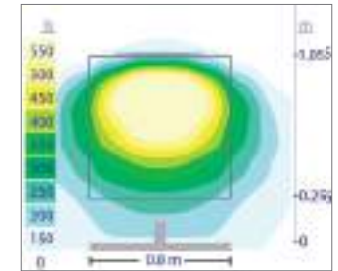
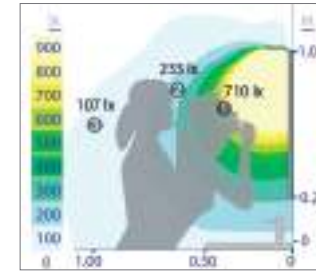
REF	Power	Color Temperature	Luminosity	Installation surfaces
E26504CI	6W	5700 K	780 lm	Cabinet, Wooden backing, Mirror
E26750CI	6W	5700 K	780 lm	Cabinet, Wooden backing, Mirror

Frosted

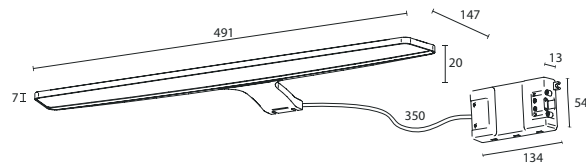
LIGHT BEAM



PHOTOMETRIC CURVES



TECHNICAL DRAWING



INSTALLATION SURFACES



S2 Mirror cabinet
With multisystem part



S3 Wooden backing



S4 Mirror



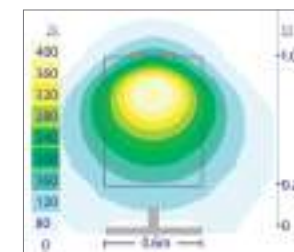
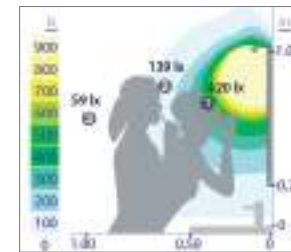
Picture: Eva 2 - 233 mm

EVA 2

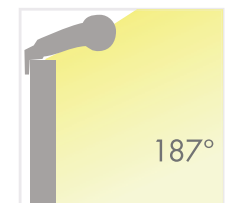
TECHNICAL INFORMATION

REF	Power	Color Temperature	Luminosity	Installation surfaces
E26799CI	6W	3000 K	392 lm	Cabinet, Wooden backing
E26710CI	6W	3000 K	392 lm	Cabinet, Wooden backing, Mirror

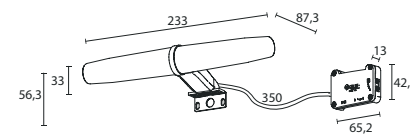
PHOTOMETRIC CURVES



LIGHT BEAM



TECHNICAL DRAWING



INSTALLATION SURFACES



S2 Mirror cabinet
With multisystem part



S3 Wooden backing



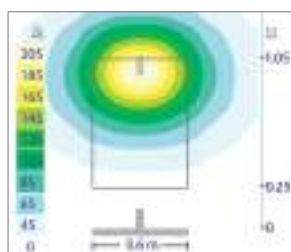
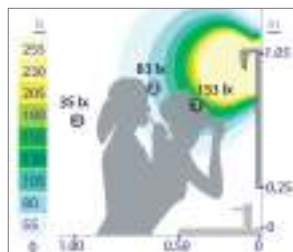
S4 Mirror

SABRINA 2

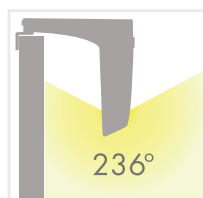
TECHNICAL INFORMATION

REF	Power	Color Temperature	Luminosity	Installation surfaces
E26713CI	3W	3000 K	140 lm	Wooden backing, Mirror
E26800CI	3W	3000 K	140 lm	Wooden backing

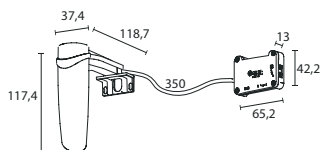
PHOTOMETRIC CURVES



LIGHT BEAM



TECHNICAL DRAWING



INSTALLATION SURFACES



S3 Wooden backing



S4 Mirror



CELIA

LED SPOTLIGHT

mm: 303 / 503 / 803

Aluminium / ABS
EBIREX

DRIVER
LESS



5700 K



CELIA 303 mm

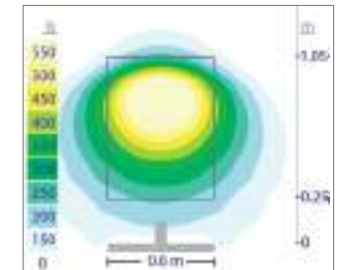
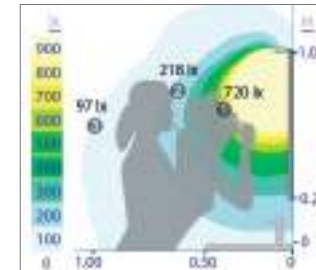
TECHNICAL INFORMATION

REF	Power	Color Temp.	Luminosity	Installation
26686CI	6W	5700 K	415 lm	Cabinet, Wooden backing, Mirror
E26686CI	6W	5700 K	415lm	Wooden backing
E26685CI	6W	5700 K	415 lm	Cabinet

LIGHT BEAM



PHOTOMETRIC CURVES



CELIA 503 mm

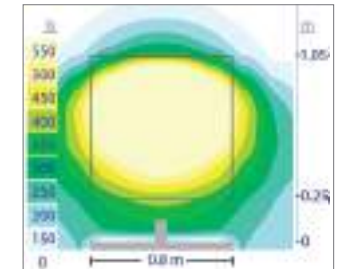
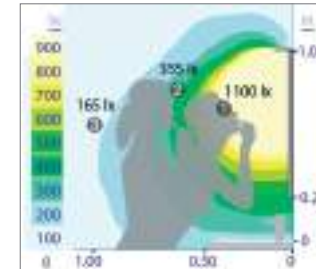
TECHNICAL INFORMATION

REF	Power	Color Temp.	Luminosity	Installation
E26756CI	10W	5700 K	710 lm	Cabinet
E26687CI	10W	5700 K	710 lm	Wooden backing
26687CI	10 W	5700 K	710 lm	Cabinet, Wooden backing, Mirror

LIGHT BEAM



PHOTOMETRIC CURVES



CELIA 803 mm

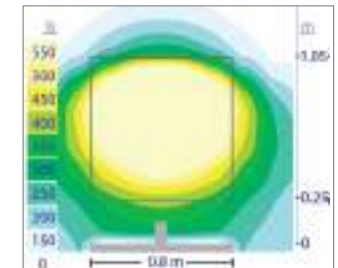
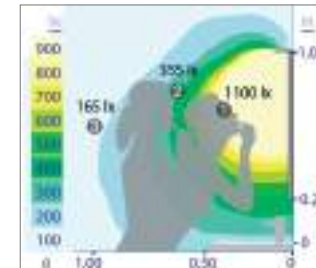
TECHNICAL INFORMATION

REF	Power	Color Temp.	Luminosity	Installation
26757CI	15W	5700 K	950 lm	Cabinet, Wooden backing, Mirror
E26757CI	15W	5700 K	950 lm	Wooden backing

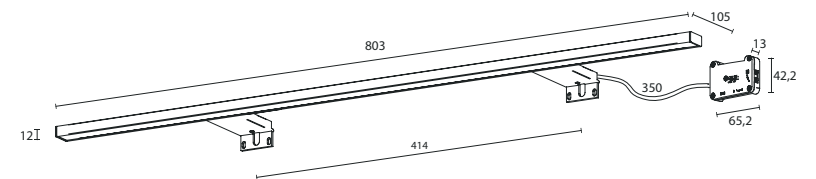
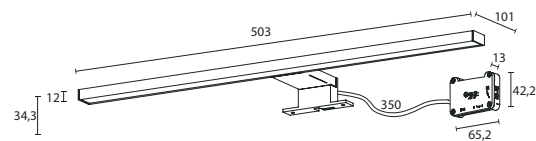
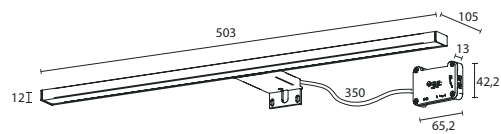
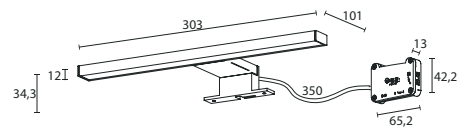
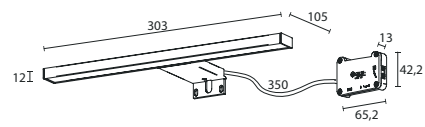
LIGHT BEAM



PHOTOMETRIC CURVES



TECHNICAL DRAWING



INSTALLATION SURFACES



S2 Mirror cabinet
Special extension



S2 Mirror cabinet
With multisystem part



S3 Wooden backing



S4 Mirror



BELA

LED SPOTLIGHT

mm: 202 X 200 / 201.5 X 134

EBIREX/ Stainless steel
EBIREX/ White

DRIVER
LESS



5700 K



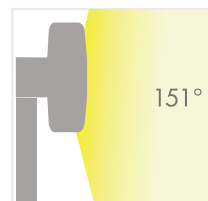
Figure: Bela 201.5 X 134 mm

BELA 134 mm

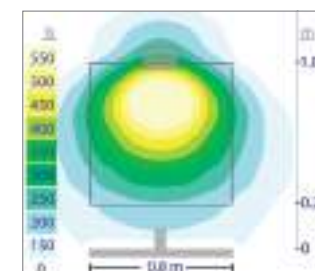
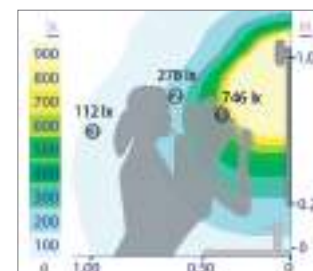
TECHNICAL INFORMATION

REF	Power	Color Temperature	Luminosity	Installation surfaces
E26371C	10W	5700 K	921lm	Wall, Wooden backing, Mirror

LIGHT BEAM



PHOTOMETRIC CURVES

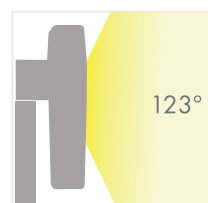


BELA 202 mm

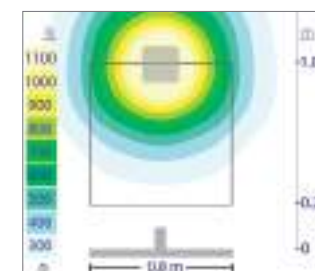
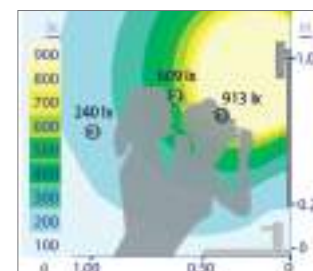
TECHNICAL INFORMATION

REF	Power	Color Temperature	Luminosity	Installation surfaces
E26379CI	15W	5700 K	1220lm	Wall, Wooden backing, Mirror

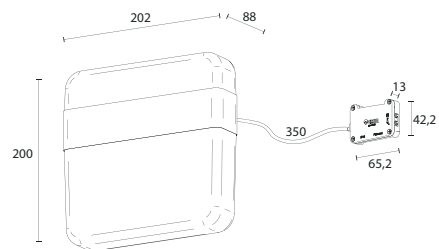
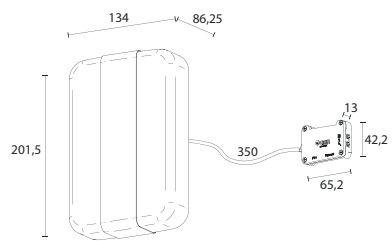
LIGHT BEAM



PHOTOMETRIC CURVES



TECHNICAL DRAWING



INSTALLATION SURFACES



S3 Wooden backing



S4 Mirror



S6 Wall





HOLLYWOOD

LED SPOTLIGHT

mm: 600 / 850

EBIREX
ABS/ Stainless

DRIVER
LESS



5700 K

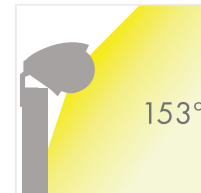
Picture: Hollywood 850 mm

HOLLYWOOD 600 mm

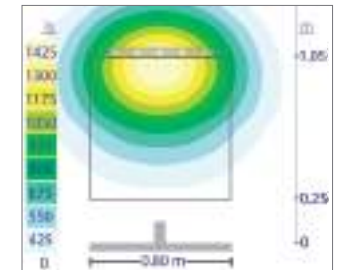
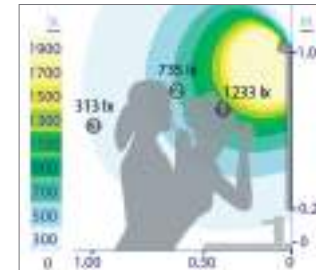
TECHNICAL INFORMATION

REF	Power	Color Temperature	Luminosity	Installation surfaces
E26505CI	15W	5700 K	1440lm	Cabinet, Wooden backing, Mirror, Wall

LIGHT BEAM



PHOTOMETRIC CURVES



HOLLYWOOD 850 mm

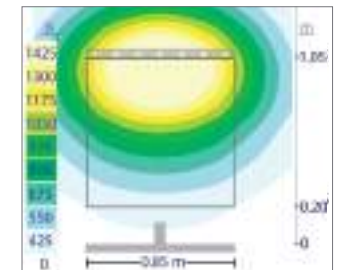
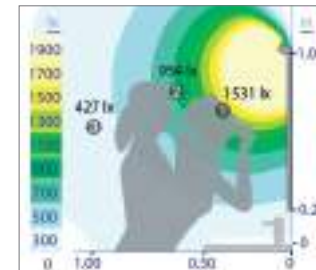
TECHNICAL INFORMATION

REF	Power	Color Temperature	Luminosity	Installation surfaces
E26506CI	21W	5700 K	2015 lm	Cabinet, Wooden backing, Mirror, Wall

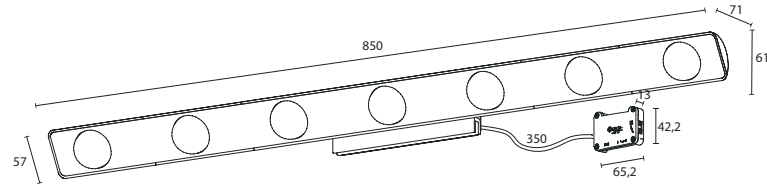
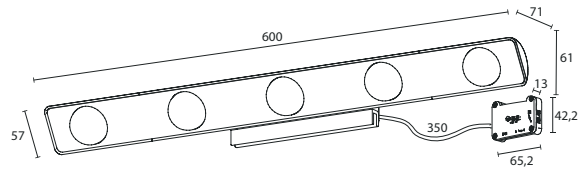
LIGHT BEAM



PHOTOMETRIC CURVES



TECHNICAL DRAWING



71

INSTALLATION SURFACES



S2 Mirror cabinet
Special extension



S3 Wooden backing



S4 Mirror



S6 Wall

PAZ

LED SPOTLIGHT

mm: 110 / 280

ABS
EBIREX

DRIVER
LESS



5700 K

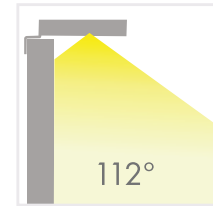


PAZ 110 mm

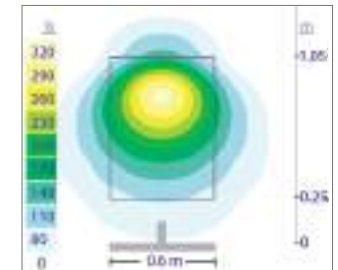
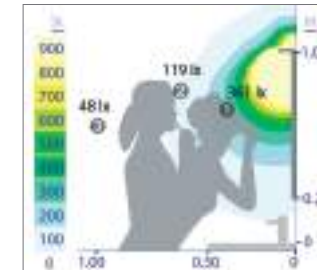
TECHNICAL INFORMATION

REF	Power	Color Temperature	Luminosity	Installation surfaces
E26410CI	6W	5700 K	347lm	Wooden backing

LIGHT BEAM



PHOTOMETRIC CURVES

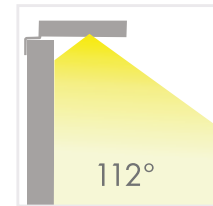


PAZ 280 mm

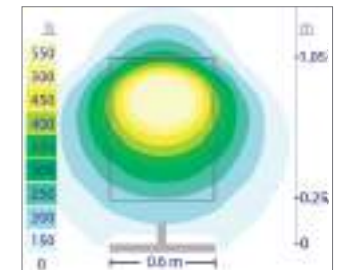
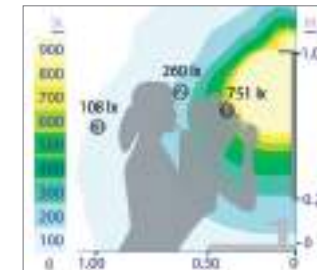
TECHNICAL INFORMATION

REF	Power	Color Temperature	Luminosity	Installation surfaces
E26386CI	6W	5700 K	750lm	Cabinet, Wooden backing, Mirror

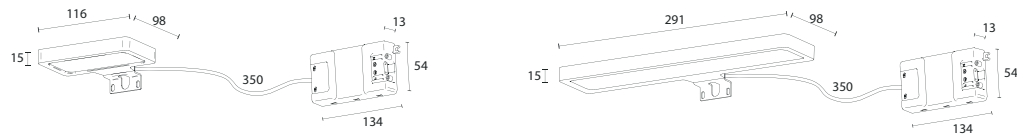
LIGHT BEAM



PHOTOMETRIC CURVES



TECHNICAL DRAWING



INSTALLATION SURFACES



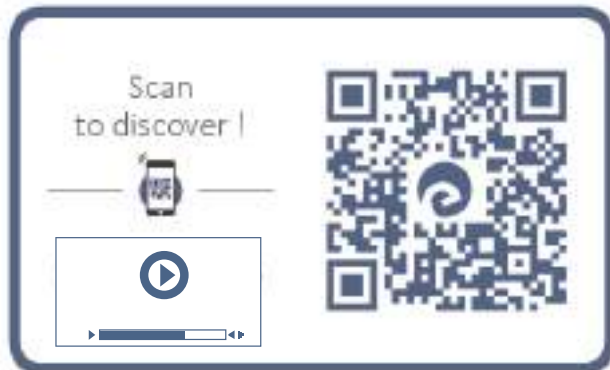
S2 Mirror cabinet
Special extension



S3 Wooden backing



S4 Mirror



PANDORA

LED SPOTLIGHT

mm: 308 · 458 · 608 · 800

Aluminium /ABS
EBIREX

DRIVER
LESS



4000 K



5700 K

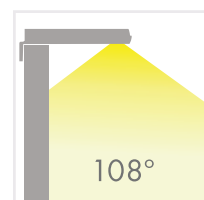


PANDORA 308 mm

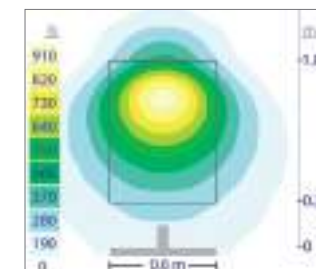
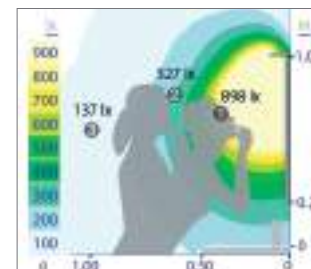
TECHNICAL INFORMATION

REF	Power	Color Temp.	Luminosity	Installation
E26684CI	8W	5700 K	770lm	Cabinet
E26484CI	8W	5700 K	770lm	Wooden backing
26484CI	8W	5700 K	770lm	Cabinet, Wooden backing, Mirror
E26721C	8W	4000 K	770lm	Cabinet, Wooden backing, Mirror

LIGHT BEAM



PHOTOMETRIC CURVES

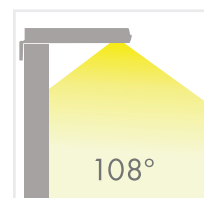


PANDORA 458 mm

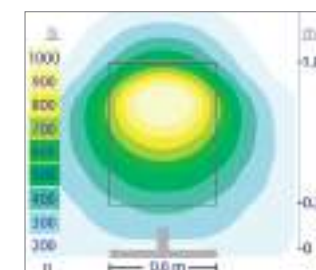
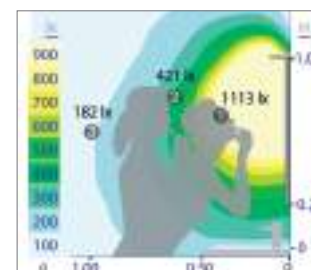
TECHNICAL INFORMATION

REF	Power	Color Temp.	Luminosity	Installation
E26485CI	10W	5700 K	1600lm	Wooden backing
26485CI	10W	5700 K	1600lm	Cabinet, Wooden backing, Mirror
E26722CI	10W	4000 K	1600lm	Cabinet, Wooden backing, Mirror

LIGHT BEAM



PHOTOMETRIC CURVES

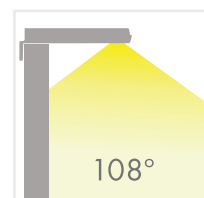


PANDORA 608 mm

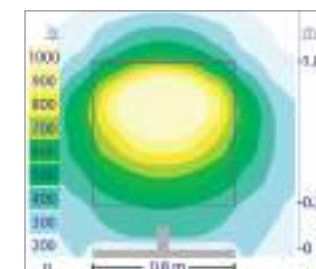
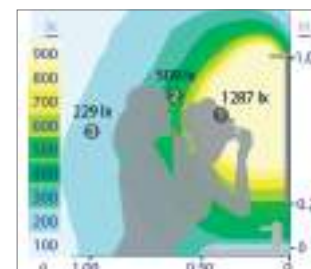
TECHNICAL INFORMATION

REF	Power	Color Temp.	Luminosity	Installation
E26486CI	12W	5700 K	2670lm	Wooden backing
E26486CI	12W	5700 K	2670lm	Cabinet, Wooden backing, Mirror
E26723CI	12W	4000 K	2670lm	Cabinet, Wooden backing, Mirror

LIGHT BEAM



PHOTOMETRIC CURVES



PANDORA 800 mm

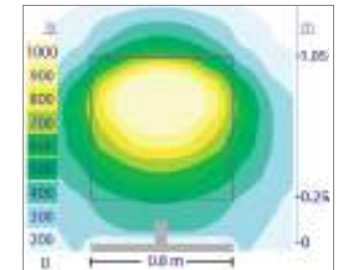
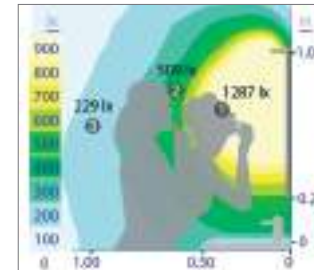
TECHNICAL INFORMATION

REF	Power	Color Temp.	Luminosity	Installation
E26693CI	15W	5700 K	2400lm	Wooden backing
26693CI	15W	5700 K	2400lm	Cabinet, Wooden backing, Mirror

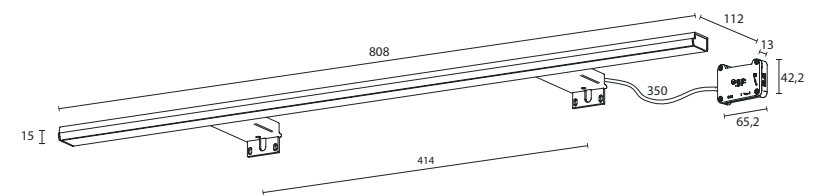
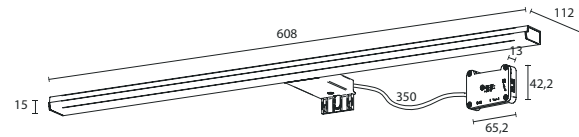
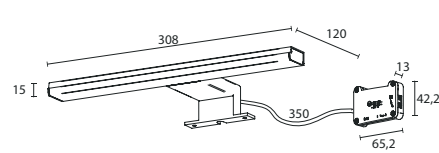
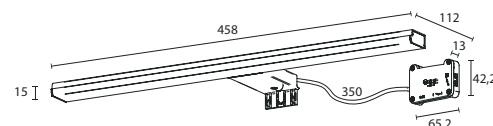
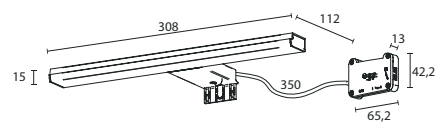
LIGHT BEAM



PHOTOMETRIC CURVES



TECHNICAL DRAWING



INSTALLATION SURFACES



S2 Mirror cabinet
With multisystem part



S3 Wooden backing



S4 Mirror

KARIN

LED SPOTLIGHT

mm: 300

Aluminium /Stainless
EBIREX



4000 K



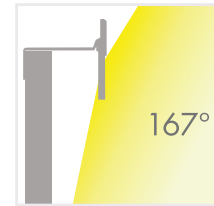
5700 K

KARIN 300 mm

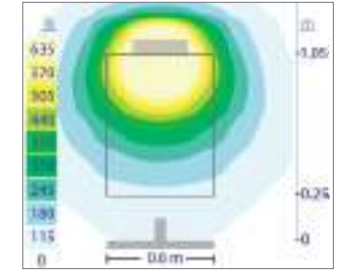
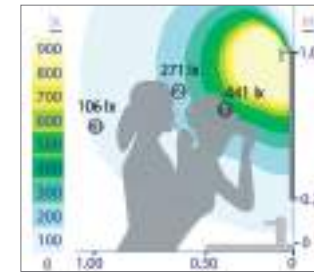
TECHNICAL INFORMATION

REF	Power	Color Temperature	Luminosity	Installation surfaces
E26072CI	6W	5700 K	600lm	Cabinet
E26052CI	6W	5700 K	600lm	Wooden backing, Wall

LIGHT BEAM



PHOTOMETRIC CURVES

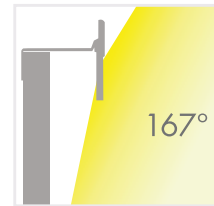


KARIN 500 mm

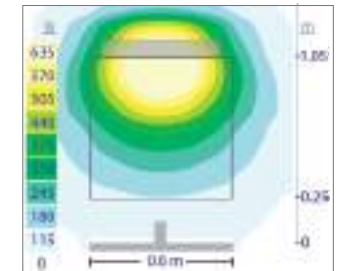
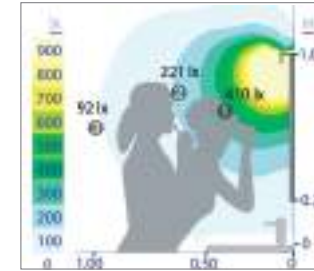
TECHNICAL INFORMATION

REF	Power	Color Temperature	Luminosity	Installation surfaces
E26222CI	6W	4000 K	680lm	Cabinet
E26073CI	6W	5700 K	748lm	Cabinet
E26221CI	6W	4000 K	747lm	Wooden backing, Wall
E26054CI	6W	5700 K	745lm	Wooden backing, Wall

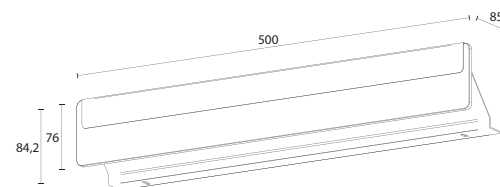
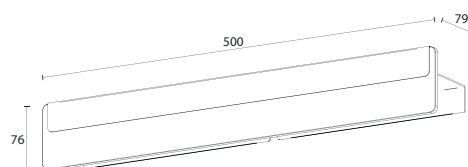
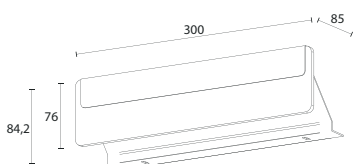
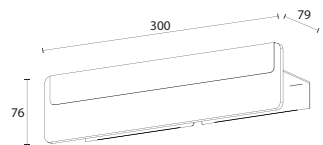
LIGHT BEAM



PHOTOMETRIC CURVES



TECHNICAL DRAWINGS



INSTALLATION SURFACES



S2 Mirror cabinet
Special extension



S3 Wooden backing



S6 Wall



ANGELA

LED SPOTLIGHT

mm. 160 / 300 / 500

Aluminium
EBIREX



5700 K



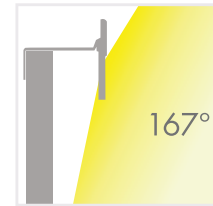
Picture: Angela 300 mm

ANGELA 160 mm

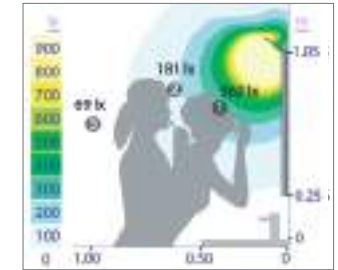
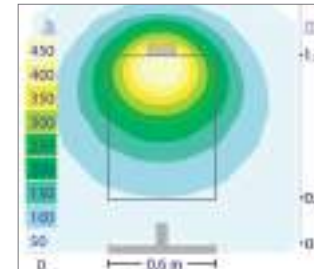
TECHNICAL INFORMATION

REF	Power	Color Temperature	Luminosity	Installation surfaces
E26102CI	3W	6000 K	415lm	Cabinet, Wooden backing, Wall

LIGHT BEAM



PHOTOMETRIC CURVES

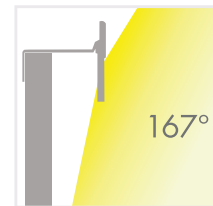


ANGELA 300 mm

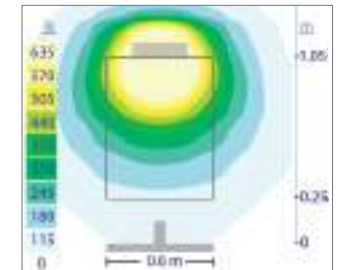
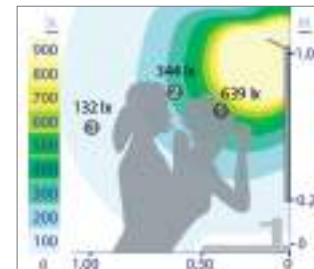
TECHNICAL INFORMATION

REF	Power	Color Temperature	Luminosity	Installation surfaces
E26088CI	6W	6000 K	598lm	Cabinet, Wooden backing, Wall

LIGHT BEAM



PHOTOMETRIC CURVES

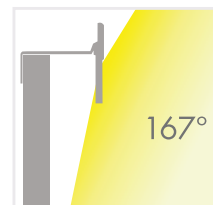


ANGELA 500 mm

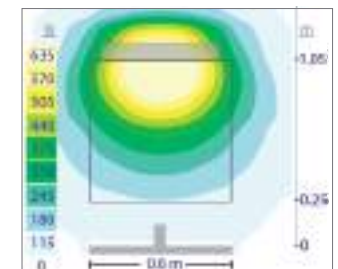
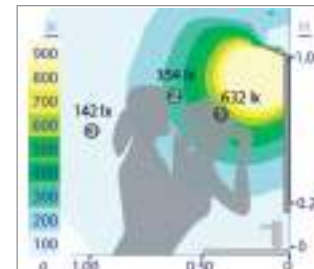
TECHNICAL INFORMATION

REF	Power	Color Temperature	Luminosity	Installation surfaces
E26048CI	6W	6000 K	748lm	Cabinet, Wooden backing, Wall

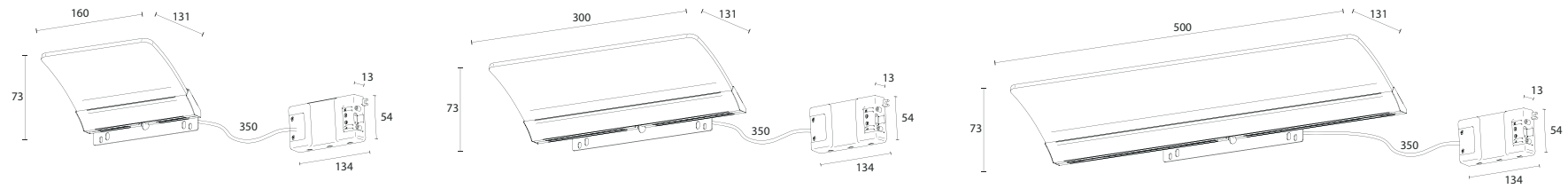
LIGHT BEAM



PHOTOMETRIC CURVES



TECHNICAL DRAWINGS



INSTALLATION SURFACES



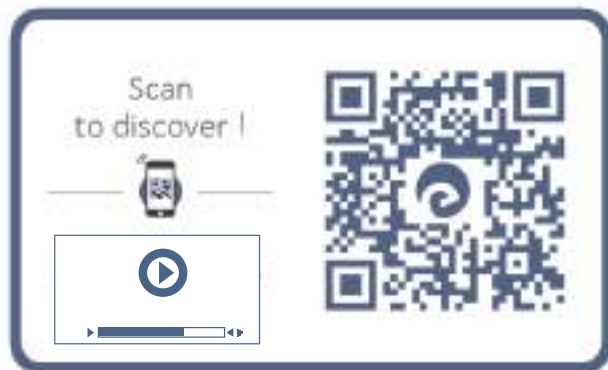
S2 Mirror cabinet
Special extension



S3 Wooden backing



S6 Wall



KATHERINE

LED SPOTLIGHT

mm: 300 / 500

Aluminium / Stainless
EBIREX



5700 K

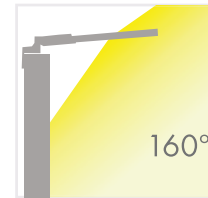


KATHERINE 300 mm

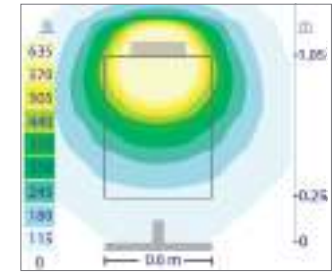
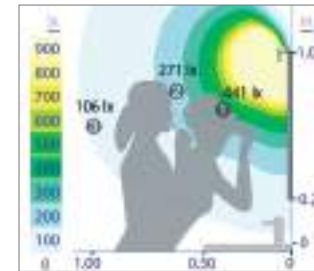
TECHNICAL INFORMATION

REF	Power	Color Temperature	Luminosity	Installation surfaces
E26087CI	6W	5700 K	598lm	Cabinet

LIGHT BEAM



PHOTOMETRIC CURVES

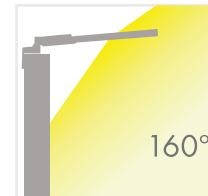


KATHERINE 500 mm

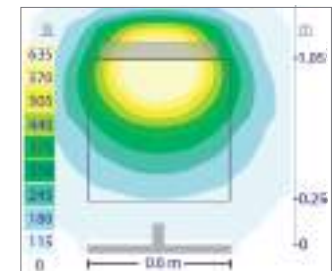
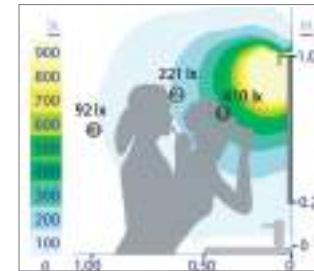
TECHNICAL INFORMATION

REF	Power	Color Temperature	Luminosity	Installation surfaces
E26086CI	6W	5700 K	745lm	Cabinet

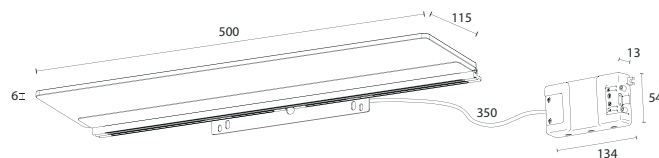
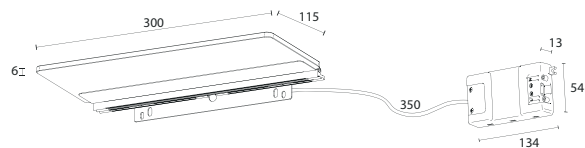
LIGHT BEAM



PHOTOMETRIC CURVES



TECHNICAL DRAWINGS



INSTALLATION SURFACES



S2 Mirror cabinet
Special extension



IRENE

LED SPOTLIGHT

mm: 160 / 286 / 496

Aluminium / Iron
EBIREX



5700 K

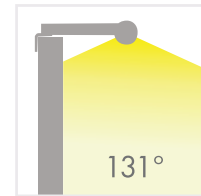


IRENE 160 mm

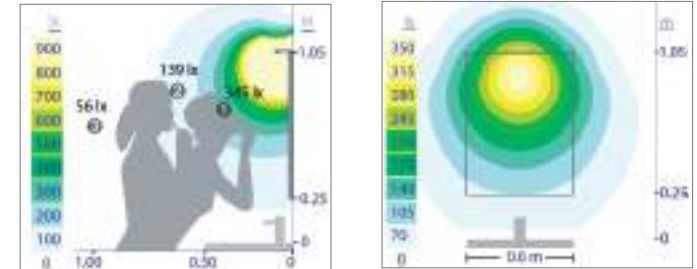
TECHNICAL INFORMATION

REF	Power	Color Temperature	Luminosity	Installation surfaces
E26067CI	3W	5700 K	250lm	Wooden backing

LIGHT BEAM



PHOTOMETRIC CURVES

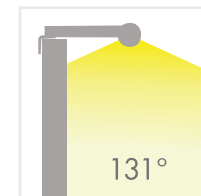


IRENE 286 mm

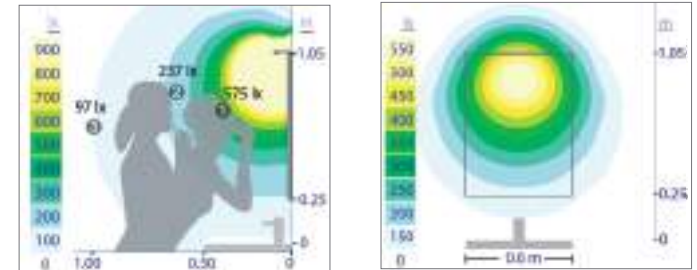
TECHNICAL INFORMATION

REF	Power	Color Temperature	Luminosity	Installation surfaces
E25860CI	6W	5700 K	840lm	Cabinet Special Extension
E25861CI	6W	5700 K	840lm	Wooden backing
25861CI	6W	5700 K	840lm	Cabinet, Wooden backing, Mirror

LIGHT BEAM



PHOTOMETRIC CURVES

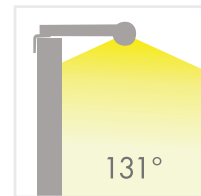


IRENE 500 mm

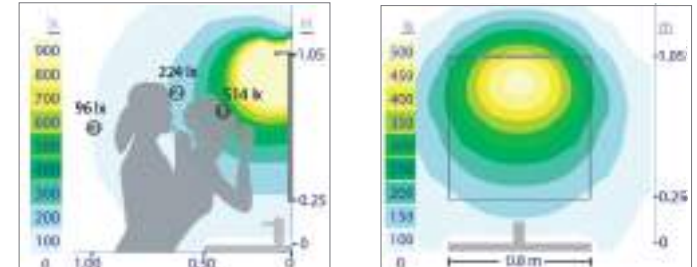
TECHNICAL INFORMATION

REF	Power	Color Temperature	Luminosity	Installation surfaces
E25863CI	6W	5700 K	840lm	Cabinet Special Extension
25862CI	6W	5700 K	539lm	Wooden backing

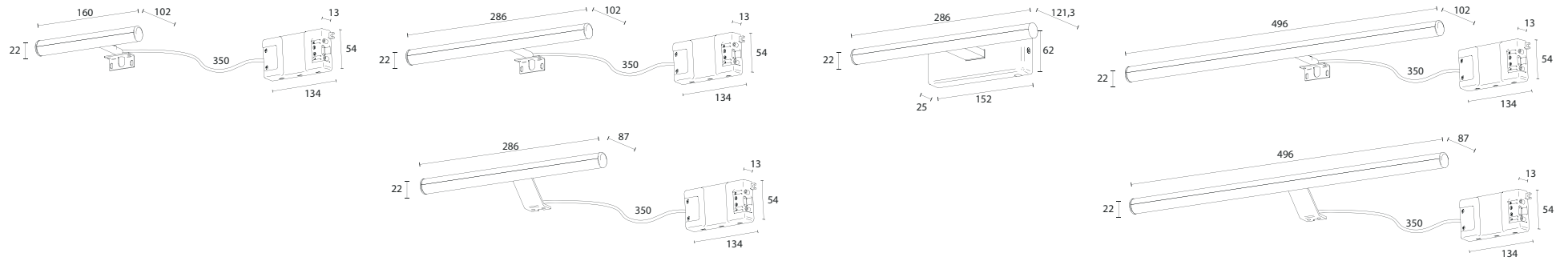
LIGHT BEAM



PHOTOMETRIC CURVES



TECHNICAL DRAWINGS



INSTALLATION SURFACES



S2 Mirror cabinet
Special extension



S2 Mirror cabinet
Multisystem part



S3 Wooden backing



S4 Mirror



ESTHER

LED SPOTLIGHT

mm: 150 / 280 / 494 / 800 / 1000

Aluminium / Zamak
PMMA

DRIVER
LESS



4000 K



5700 K



Adjustable

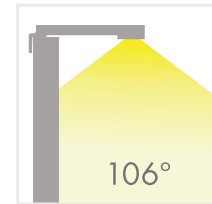


ESTHER 150mm

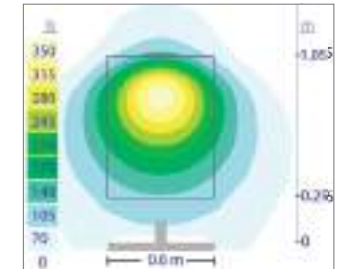
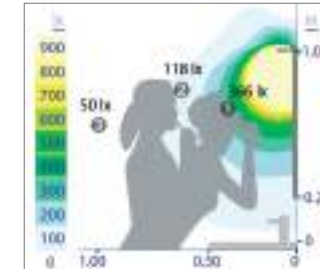
TECHNICAL INFORMATION

REF	Power	Color Temperature	Luminosity	Installation surfaces
E26644CI	3 W	5700 K	250 lm	Cabinet, Wooden backing, Mirror

LIGHT BEAM



PHOTOMETRIC CURVES

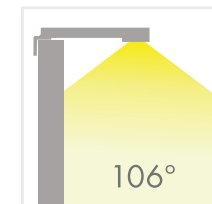


ESTHER 280mm

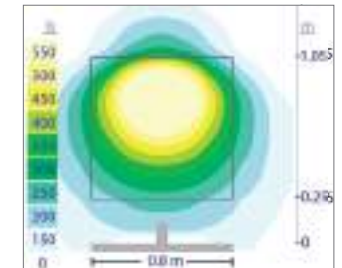
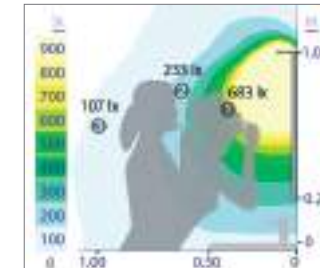
TECHNICAL INFORMATION

REF	Power	Color Temperature	Luminosity	Installation surfaces
E25858CI	6 W	5700 K	840 lm	Cabinet
E25855CI	6 W	5700 K	539 lm	Wooden backing
E26344CI	6 W	5700 K	840 lm	Cabinet, Wooden backing, Mirror
E26078CI	6 W	4000 K	490 lm	Cabinet, Wooden backing, Mirror
E26374CI	6 W	5700 K	539 lm	Wall

LIGHT BEAM



PHOTOMETRIC CURVES

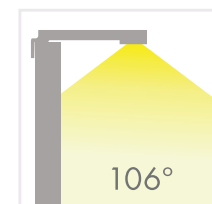


ESTHER 494mm

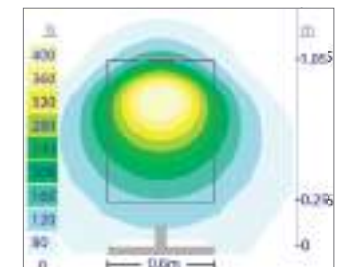
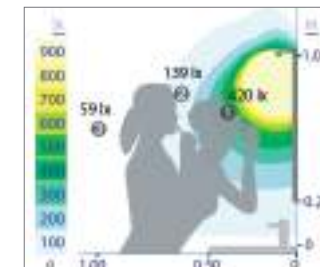
TECHNICAL INFORMATION

REF	Power	Color Temperature	Luminosity	Installation surfaces
E25859CI	6 W	5700 K	840 lm	Cabinet
E25856CI	6 W	5700 K	539 lm	Wooden backing
E26345CI	6 W	5700 K	539 lm	Cabinet, Wooden backing, Mirror
E26375CI	6 W	5700 K	539 lm	Wall

LIGHT BEAM



PHOTOMETRIC CURVES

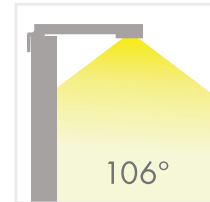


ESTHER 800mm

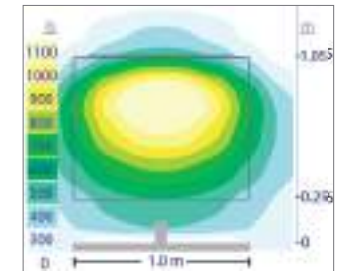
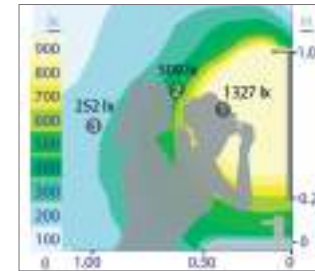
TECHNICAL INFORMATION

REF	Power	Color Temperature	Luminosity	Installation surfaces
E26071CI	12W	5700 K	1309 lm	Cabinet
25857CI	12W	5700 K	1309 lm	Cabinet, Wooden backing, Mirror

LIGHT BEAM



PHOTOMETRIC CURVES

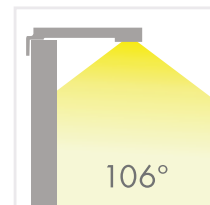


ESTHER 1000mm

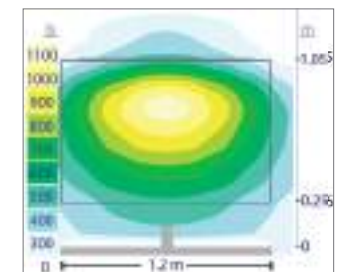
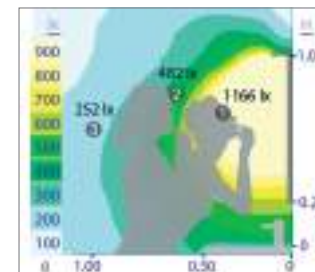
TECHNICAL INFORMATION

REF	Power	Color Temperature	Luminosity	Installation surfaces
E26077CI	12W	5700 K	1039 lm	Cabinet, Wooden backing, Mirror

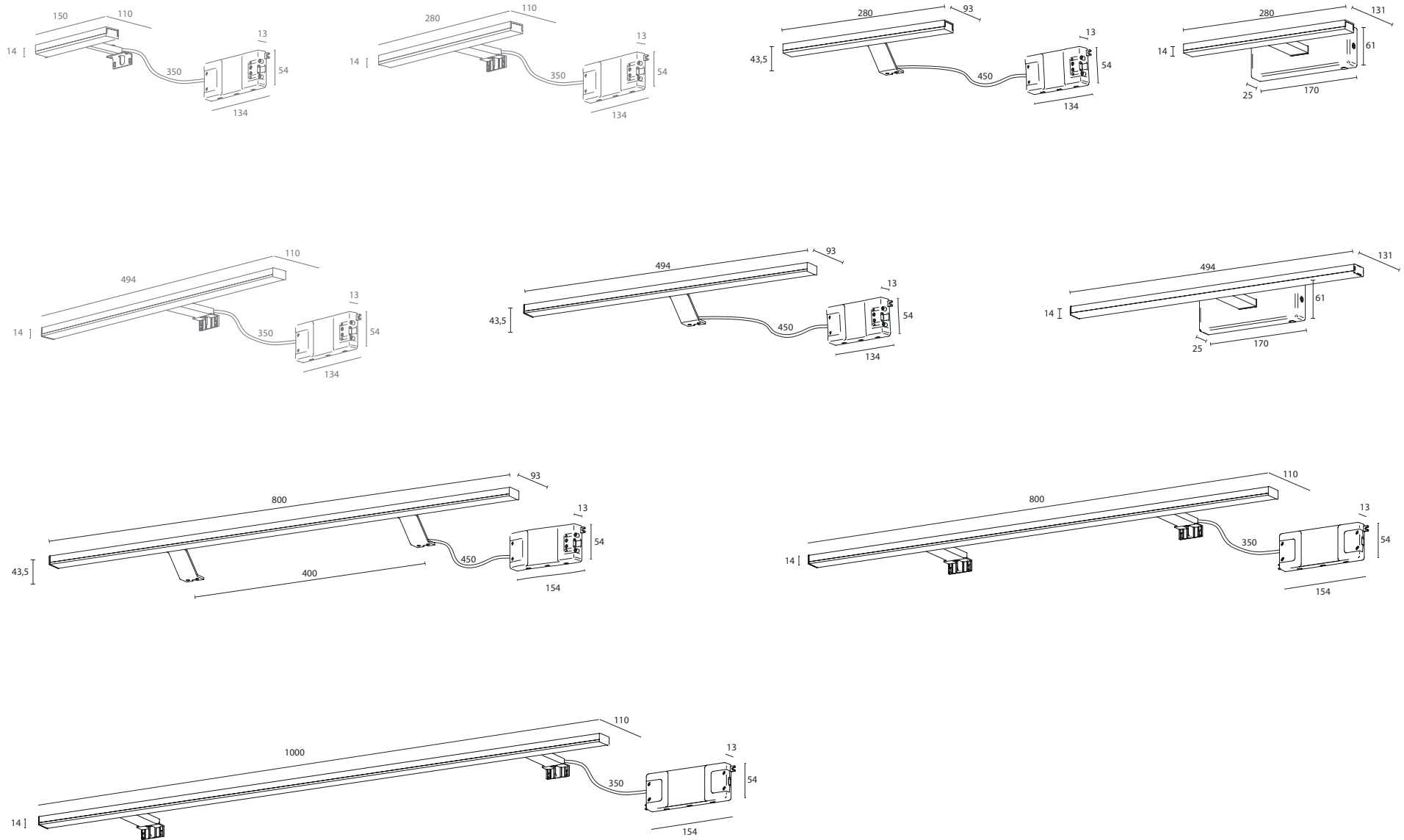
LIGHT BEAM

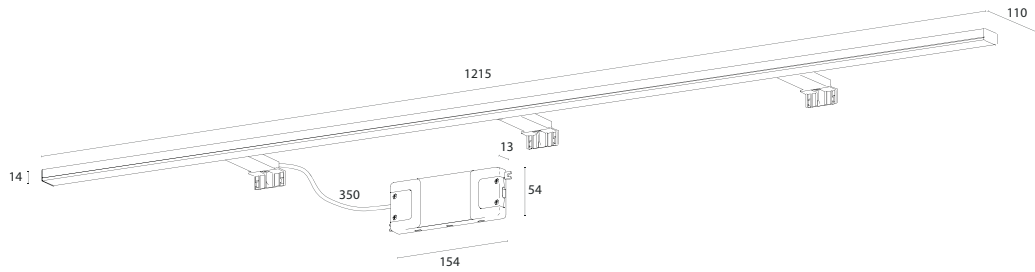


PHOTOMETRIC CURVES



TECHNICAL DRAWING





INSTALLATION SURFACES



S2 Mirror cabinet
Special extension



S2 Mirror cabinet
Multisystem part



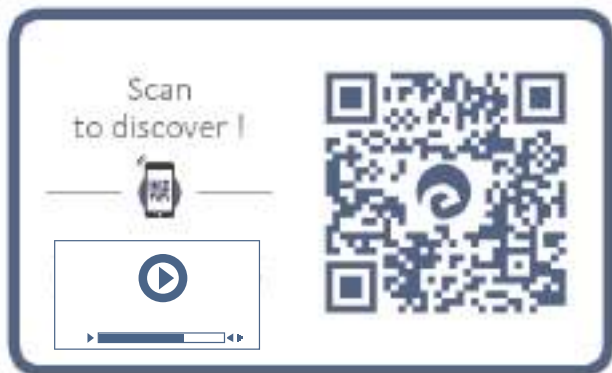
S3 Wooden backing



S4 Mirror



S6 Wall



SARA

LED SPOTLIGHT

mm: 90

Aluminium / Zamak
EBIREX



5700 K

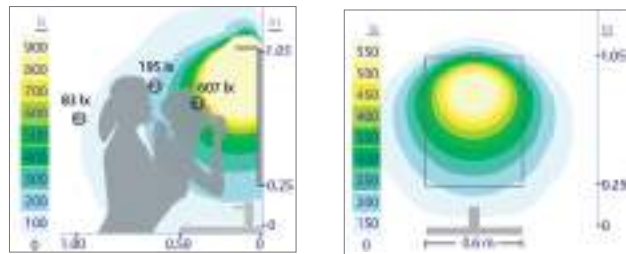


SARA

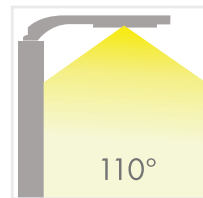
TECHNICAL INFORMATION

REF	Power	Color Temperature	Luminosity	Installation surfaces
26065CI	6W	5700 K	1440 lm	Cabinet, Wooden backing, Mirror

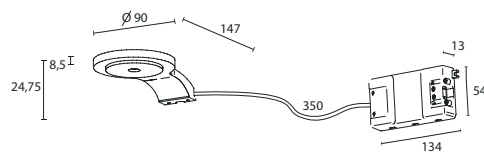
PHOTOMETRIC CURVES



LIGHT BEAM



TECHNICAL DRAWING



INSTALLATION SURFACES



S2 Mirror cabinet



S3 Wooden backing



S4 Mirror



SALES TERMS

This document lays down the working procedures and sale terms between Ebir Iluminación, S.L. and its customers.

A Working procedure

1. Acceptance of sales terms

By signing this document the customer accepts the Sales Terms defined below. If there should be any specific agreement signed by both parties, this would prevail over the Sales Terms.

2. Sales Offer

The offer will state the price, form of payment, lot, minimum purchase order, incoterm and the type of service negotiated. The offer is valid for one month as from the date of its issue.

3. Order

Orders complying with the conditions agreed in the sales offer are accepted. Only written orders will be accepted.

4. Confirmation

Ebir Iluminación S.L. sends the customer confirmation of 100% of orders in at most 3 working days. Confirmation of the order implies its acceptance. The customer must verify that all the conditions stated in the order confirmation are correct.

5. New Product Code

For any new product, or modification and/or variation of already existing items, a "Project entry application" must be filled in, in order to examine the feasibility, price, planning, phases and development of the project.

6. Returns

In the event of any claims, the customer must inform Ebir Iluminación of the incident in writing, stating the code, description, manufacturing order (OT), units affected and grounds for the claim per article code. With this information, Ebir Iluminación will authorise the collection of the faulty material, assuming the transport expenses for collection and replacement of the fittings to our customer's premises. If Ebir does not authorise the collection of the material all the transport costs and expenses arising will be for the customer's account.

In the event of it not being possible for the customer to recover the material and return this to Ebir for its inspection, an agreement between both parties for handling the claim will need to be reached.

Within 48 h from receiving the claim, Ebir will inform of its reception and registration, whether this is accepted or not and the procedure to be applied in either case.

Ebir reserves the right to make replacements and/or credits for products returned outside the guarantee period, as well as of products whose return conditions are not appropriate and which could interfere in determining the cause of return. Ebir Iluminación's authorisation will be required for the customer to be able to deduct the amount of any credit from outstanding payments.

7. Communication

Any formal communication will be through the following persons:

Forecasts, orders, offers, samples and new projects:

Head of Sales

Claims, order situation and shipments: Head of Customer Care

Payments: Head of Administration

Marketing: Head of Marketing

8. Follow-up of the customer's product portfolio

Every year Ebir's Head of Sales will inform of the Customer Price List with all codes, prices and conditions for the items in their portfolio.

B Sales terms

1. Product

The product is in accordance with the technical sales datasheet per code which will be accepted along with the offer.

2. Price:

The sales price is calculated based on the agreed amounts and conditions. These prices will be stated in the Customer's Price List.

3. Delivery time

Except for force majeure causes, lead times will be as stated in the Delivery Confirmation for the order sent by Ebir to the customer. Delivery times will be confirmed depending on the type of service arranged:

a. Scheduling: These are customer orders scheduled in several deliveries on condition that each of the deliveries respects the minimum order and the replenishment lead time set in the sales offer. The delivery date of the first order will be confirmed depending on the production capacity. Any later orders will be delivered in accordance with negotiations with the customer. EBIR will not stock goods for over one week.

In cases in which the deliveries of scheduled orders fail to respect the minimum order and/or the replenishment lead time established in the sales offer, this will be termed Stock Scheduling and have to be negotiated by means of an agreement with the customer covering the specific details of CAE [Business and Activity Code], lot, minimum order, deliveries and specific period for which the stock will remain at EBIR's premises.

b. Against stock: The delivery of the stock orders will be made in at least two working days (after enquiring as to availability).

c. Manufacture: these are specific customer orders whose delivery date will be confirmed depending on production capacity. All manufacturing orders must respect the minimum order established in the sales offer.

4. Form of payment:

The form of payment will be as stated in the invoice, which will have been previously agreed in the offer. Processing and/or shipping of the orders will only take place if the customer is up to date with payment of their invoices, on condition that they have risk available at the credit insurance company.

5. Incoterms

The incoterm will be as established in the sales offer.

6. Guarantee:

The Guarantee for all Ebir's products is for 30 months as from the date of the invoice issued to the customer by Ebir. The guarantee does not cover any flaws caused by wear or breakage, incorrect installation, faulty adjustment, dirt, improper transport, faulty use, negligence or accident.

The products must be used according to the instructions of Ebir Iluminación, S.L., in accordance with rules.

7. Exclusivity and confidentiality

If there is any kind of exclusivity, this must be defined in a separate agreement.

8. Duration

These general sales terms are automatically renewed every year. If either of the parties does not wish to renew these terms, it must inform of its decision in writing at least 3 months in advance.

Any lack of commercial relations between both parties for over one year shall cancel the extension of these sales terms.



 **EBIR 360**